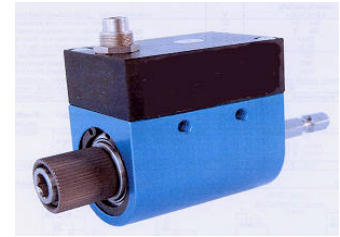


# TLNH and TLNHA TORQUE TRANSDUCER



The TLNH and TLNHA 1/4" hexagon drive torque transducers provide torque measurement for tool testing applications at speeds up to 4,000 rpm. They have a non-contact data transmission system and integral signal conditioning providing a  $\pm 5V$  analogue output with a  $\pm 10V$  option. Accuracy options are 0,1% and 0,25%fs. Speed/Angle measurement is an option giving 360 pulses/rev. An RS485 interface is an option on the TLH range only.

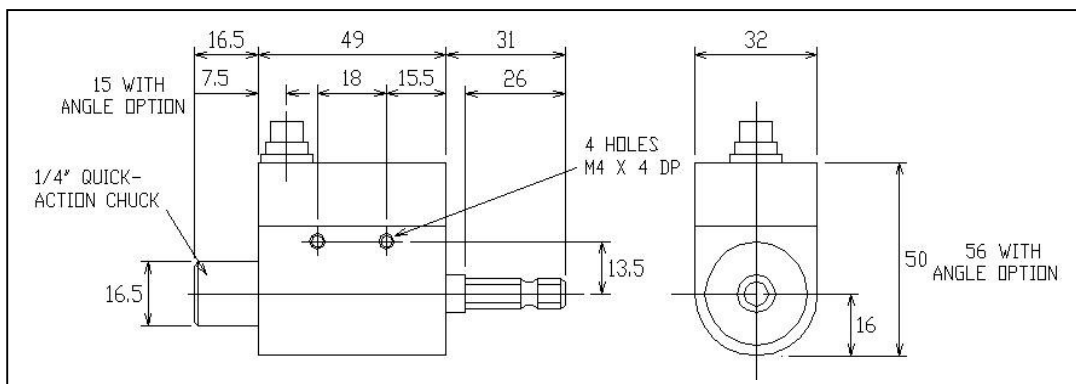
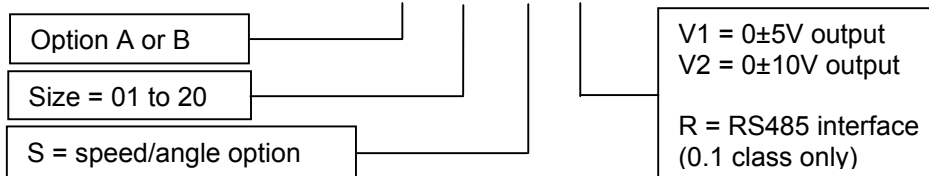
MODEL TLNH/ TLNHA	RATED TORQUE Nm	MAX SPEED rpm	TORSIONAL STIFFNESS Nm/rad	MAX AXIAL LOAD (N)
01	0,1	3000	1,0	15
02	0,2	3000	1,0	20
05	0,5	3000	5,8	30
1	1,0	4000	$2,3 \times 10^2$	40
2	2,0	4000	$2,9 \times 10^2$	50
5	5,0	4000	$4,6 \times 10^2$	50
10	10	4000	$5,2 \times 10^2$	50
15	15	4000	$5,2 \times 10^2$	100
20	20	4000	$5,2 \times 10^2$	100

## TECHNICAL SPECIFICATION

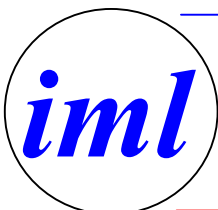
Full scale analogue output	0 $\pm$ 5V	Accuracy class	0.1	Operating Temp	0 to +60°C
RS485 option	$\pm 15$ bit	Accuracy class	0.2	Zero Shift	< $\pm 0.05\%/C^\circ$
Supply Voltage	12 to 28VDC	Repeatability (class 0.1)	$\pm 0.02\%$ fs	Span Shift	< $\pm 0.02\%/C^\circ$
Supply current	<60mA	Repeatability (class 0.2)	$\pm 0.04\%$ fs	Protection	IP50
		Overload Capacity	150% fs		

## ORDERING CODES

TLNH - X - XX - X - X



Data sheet TLNH/0107. All dimensions are in mm. Details may change without notice, please ask for confirmation if required.



## Industrial Measurements Ltd

Willow Industrial Park, Willow Road, Trent Lane, Castle Donington,  
Derby DE74 2NP Phone: (0)1332 810240 Fax (0)1332 812440

Email: [mail@indmeas.co.uk](mailto:mail@indmeas.co.uk) Web: [www.indmeas.co.uk](http://www.indmeas.co.uk)