

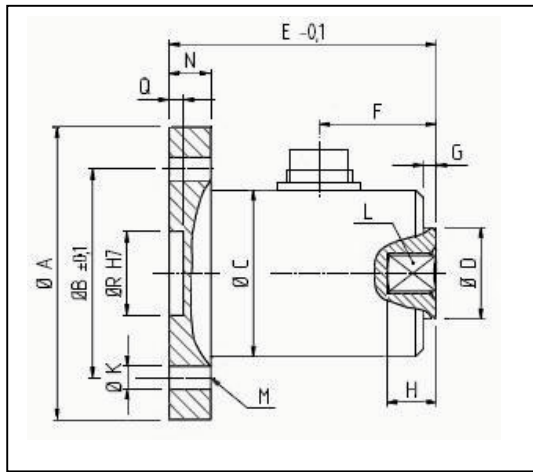
# TLSF-F TORQUE TRANSDUCER



These static torque transducers are principally designed for tool testing applications. They have flanges for bench fixing and standard female squares. Hand-held meters like the TR150 can be used with these transducers and other instrumentation is available. Please see appropriate data sheets.

## TECHNICAL SPECIFICATION

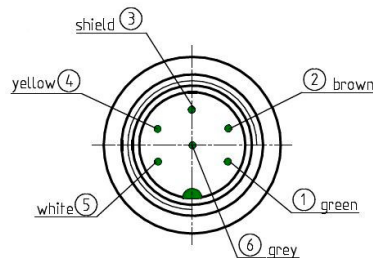
Accuracy class	0,2 (optional 0,1)	Operating Temp	-5 to +45°C
Sensitivity	1,0mV/V	Overload Capacity	150% fs
Bridge resistance	350 ohms	Protection	IP50
Excitation voltage	2 to 10V		



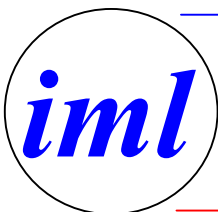
TLSFF/Nm	A	B	C	D	E	F	G	H	K	L	M	N	P	Q	R
2; 5; 10	70	50	39	22	64	28	3	8	5,5	1/4	4x90°	10	45°	3	20
25; 63	70	50	39	22	64	28	3	11,5	5,5	3/8	4x90°	10	45°	3	20
160	80	60	45	29,8	75	34	15	16	6,6	1/2	4x90°	12	45°	3	20
500	100	80	59	44	88	43	3	24	9	3/4	6x60°	15	30°	3	20
1000	120	100	69	54	94	49	5	28,6	11	1	8x45°	15	22,5°	3	20
2000	145	120	90	76	124,5	69,5	5	41,5	13	1 1/2	8x45°	20	22,5°	3	20
3000; 5000	200	170	125	95	129,5	72,5	5	41,5	17	1 1/2	8x45°	25	22,5°	4	105

## PIN CONNECTIONS

PIN	DESIGNATION
1	Supply -
2	Supply +
3	Screen
4	Signal +
5	Signal -
6	Cal



Data sheet TLSF-F/0207. All dimensions are in mm. Details may change without notice, please ask for confirmation if required.



## Industrial Measurements Ltd

Willow Industrial Park, Willow Road, Trent Lane, Castle Donington,  
Derby DE74 2NP Phone: (0)1332 810240 Fax (0)1332 812440

Email: [mail@indmeas.co.uk](mailto:mail@indmeas.co.uk) Web: [www.indmeas.co.uk](http://www.indmeas.co.uk)