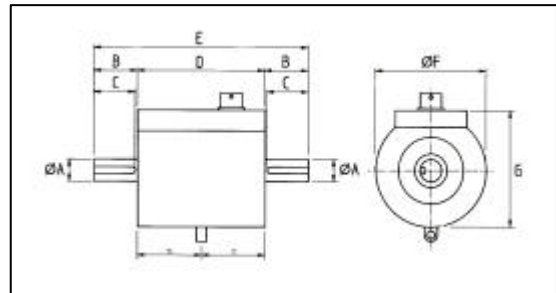


TRP and TRP-CLT TORQUE TRANSDUCERS



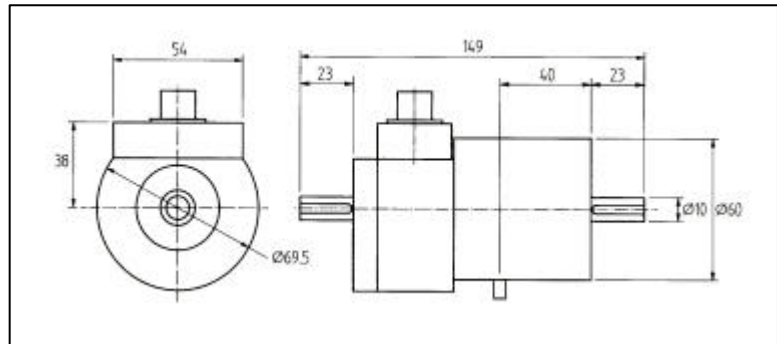
The TRP versatile torque transducers provide accurate and cost-effective 'in-line' torque measurement. The units incorporate silver slip rings and silver-graphite brush-gear for strain-gauge bridge power and signal transmission. Options include speed measurement, torsionally stiff flexible couplings and a range of digital readouts and amplifiers. Intermediate ratings are available at no extra cost.

MODEL No.	STOCK RANGE	MAX SPEED	A	B	C	D	E	F	G
TRP-5	5Nm	8000	12	26,5	23	65	118	60	65
TRP-10	10Nm	8000	12	26,5	23	65	118	60	65
TRP-50	50Nm	8000	12	26,5	23	65	118	60	65
TRP-100	100Nm	6000	20	53	45	108	215	102	95
TRP-250	250Nm	6000	25	53	45	108	215	102	95
TRP-500	500Nm	6000	30	53	45	108	215	102	95
TRP-1K	1KNm	6000	35	53	45	108	215	102	95
TRP-2K	2KNm	3000	50	71	66	170	312	177	174
TRP-5K	5KNm	3000	60	100	95	170	370	190	188



The design of the TRP-CLT increases stiffness to nullify any external bend effects.

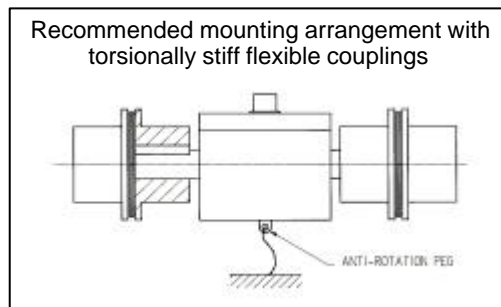
MODEL No	RANGE	MAX SPEED
TRP-CLT-1	1 Nm	8000
TRP-CLT-5	5 Nm	8000
TRP-CLT-10	10 Nm	8000



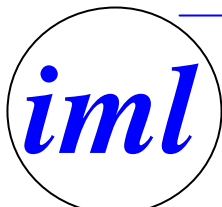
Shaft tolerance is h6 Keyways are to BS4235 pt1 1972

TECHNICAL SPECIFICATION

Nominal Sensitivity	1.5mV/V
(1Nm unit is 1.0 mV/V)	
Overload Capacity	150% fs
Bridge Supply	10V
Bridge Resistance	350 ohms
Non-linearity	±0.1% fs
Repeatability	±0.05% fs
Hysteresis	±0.1% fs
Operating Temp	0 to +80°C
Compensated Range	20 to +60°C
Storage Temp.	-30 to +90°C
Zero Shift	< ±0.01%/C°
Span Shift	< ±0.02%/C



Data sheet TRP0902 . All dimensions are in mm. Details may change without notice, please ask for confirmation if required



Industrial Measurements Ltd

Willow Industrial Park, Willow Road, Trent Lane, Castle Donington, Derby DE74 2NP Phone: (0)1332 810240 Fax (0)1332 812440

Email: mail@indmeas.co.uk Web: www.indmeas.co.uk